

**БИОЛОГИЧЕСКИЕ ОСОБЕННОСТИ
SYRINGA X CHINENSIS 'DUPLEX' REHD.
В УСЛОВИЯХ ЮЖНОГО БЕРЕГА КРЫМА**

**BIOLOGICAL PARTICULARITIES OF *SYRINGA X CHINENSIS*
'DUPLEX' REHD. IN THE CONDITIONS OF THE SOUTH COAST
OF THE CRIMEA**

**Зыкова В.К.
Zykova Vera**

**Федеральное бюджетное учреждение науки
«Никитский ботанический сад – Национальный научный
центр РАН»**

**Federal State Budgetary Scientific Establishment "Nikita
Botanical Gardens - National Scientific Center"**



***Syringa vulgaris* L.** has a long history of cultivation in the Crimea.
In the end of XVIII century lilacs decorated the Crimean city of Mangup.



Lilacs in the Crimea



The lilacs with subtropical plants in the Crimea

The lilac collection is one of the 8 flower crops collections in the Nikita botanical gardens





Nowadays lilac collection includes more than 100 cultivars

**There are 21 cultivars bred by Leonid Kolesnikov
in the lilac collection of the Nikita botanical gardens**



Aleksey Mares'ev



Krasavitsa Moskv



P. P. Konchalovsky



Leonid Leonov



Marshal Vasilevsky

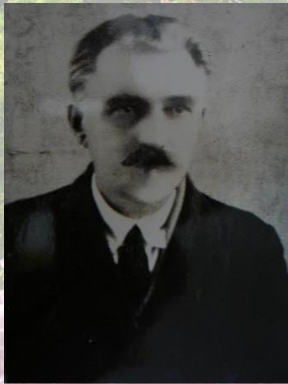
**The best cultivars for the condition of the South Coast of the Crimea bred
by Leonid Kolesnikov**



Nadezhda



Olympiada Kolesnikova



Nikolay Kostetsky



Vera Klimenko

Syringa breeding in the Nikita botanical gardens was initiated in 1941 by Nikolay Kostetsky and continued by Vera Klimenko, Zinaida Klimenko and Alexandr Grigoryev. In the middle of the XX century they created more than 20 cultivars adapted to the Crimean soil and climatic conditions and characterized by highly ornamental properties.



Nikolay Kostetsky



Sevastopolsky Waltz



Eltigen



***Syringa x chinensis* Willd.**

was introduced to the Nikita botanical gardens in 1816



***S. x chinensis* 'Duplex' (Lemoine) Rehd. was introduced in 2001**



There are more than 20 multiple-aged plants of *S. x chinensis* 'Duplex' in the Nikita botanical gardens now



Leaves of *S. x chinensis duplex* Rehd.:

А – dissected,
Б – entire

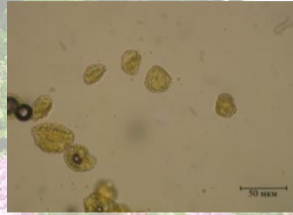
Dissected leaves of *S. x chinensis* 'Duplex'



1-9 pairs of buds form inflorescences



**Pollen of *S. x chinensis* 'Duplex'
(200 X)**



A – in glycerol



B – in acetocarmine

**There are only 23% of
morphologically normal pollen**



Young plants of *Syringa x chinensis* 'Duplex' have two blooming periods – April-May and August-November



Таксон	Средние сроки наступления фенофаз						
	Распускание почек	Образование первых листьев	Бутонизация	Начало цветения	Конец цветения	Полное созревание плодов	Листопад
<i>S. x chinensis</i> Willd.	24.II	26.III	18.III	26.IV	10.V	–	2.XI
<i>S. chinensis</i> 'Duplex'	21.II	28.III	18.III	23.IV	11.V	–	2.XI
<i>S. vulgaris</i> L.	6.III	29.III	3.IV	28.IV	12.V	15.IX	3.XI

The average flowering beginning date of *S. x chinensis* 'Duplex' is April 23,
flowering end date – May 11

Average duration of vegetation is 255 day (maximum in our collection)

THANK YOU FOR YOUR ATTENTION

